

FIU Researcher Leads US Arctic GEOTRACES – 2015 Expedition

By David Kadko

May 2015
Issue

Upcoming Events
(page 2)

Awards March 2015
(page 2)

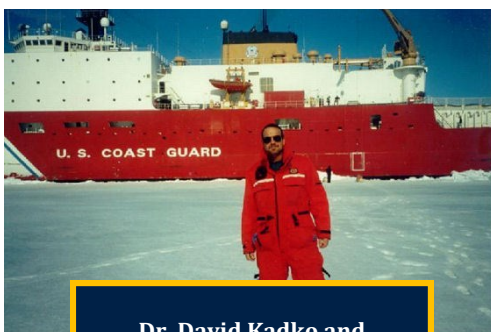
Limited Submissions
(page 8)

Funding
Opportunities
(Excel file attached)

The Arctic plays a significant role in global climate change. The consensus of scientific thought holds that recent and ongoing Arctic change, such as the record minimum sea ice extent in September 2012, is beyond natural variability and represents a harbinger of changes to come. The IPCC 2001 report states: "Because of a variety of positive feedback mechanisms, the Arctic is likely to respond rapidly and more severely than any other area on Earth, with consequent effects on sea ice, permafrost, and hydrology." Changes felt in the Arctic, in turn, will ultimately have global impacts, through feedbacks related, for example, to melting ice and release of carbon and methane from permafrost.

To understand the current state of Arctic processes, the interconnectivity within the Arctic system, and the trajectory of change, a team of researchers, led by an FIU scientist, will travel to the Arctic Ocean in August—October 2015 to conduct experiments that will contribute to better understanding the effects of global climate change in the region.

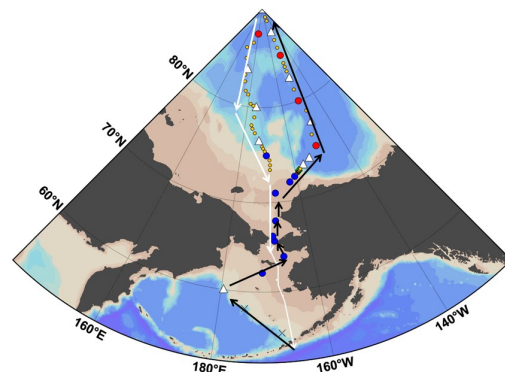
Established by the U.S. GEOTRACES Science Steering Committee, the U.S. Arctic GEOTRACES initiative will be part of an international, multiple icebreaker effort—provided by the United States, Canada and Germany—and will include scientists from several nations who will conduct sampling of the Arctic Ocean.



Dr. David Kadko and the USCGC Healy

Dr. David Kadko, professor and associate director of FIU's Applied Research Center, will be chief scientist aboard the

icebreaker USCGC HEALY. The project will study how the carbon budget, geochemical cycles, and ecosystems in the Arctic respond to rapidly changing climate conditions.



Track for the 2015 HEALY Expedition

The international program will be unprecedented in regional scope and scientific breadth. This marks the first time that grand-scale, coordinated geochemical measurements will be performed in the Arctic Ocean. Data gathered will help model feedback mechanisms and future trajectories of Arctic change, and measurements will establish a baseline against which future conditions can be compared.

GEOTRACES is an international program whose mission is to identify processes and quantify fluxes that control the distributions of key trace elements in the ocean, and to establish the sensitivity of these distributions to changing environmental conditions. The GEOTRACES program has held several informational meetings around the world to update the scientific community on the planning process and solicit input from researchers. The meetings and workshops, funded in part by the National Science Foundation, have brought together some of the world's top scientists interested in the biogeochemical cycles of trace elements and their isotopes to assist in planning the expeditions. Most recently, in January 2015, a team of 70 scientists, students, Coast Guard personnel, and National Science Foundation managers, organized by Dr. Kadko, met in Miami to finalize the plans for this summer's expedition.

Upcoming Events

May 2015

- **May 5, 1 to 5 pm**, SIPA Auditorium, *2015 IFRI Symposium*, [RSVP](#) required
- **May 6, 8:15 am to 5 pm**, SIPA Auditorium, *2015 IFRI Symposium*, [RSVP](#) required
- **May 12, 10 am to 5 pm**, TBD, *South Florida Child Psychology Conference*, [registration](#) required
- **May 13, 12 to 1 pm**, AHC 1 #110, "[Community Workshop: Creating a Daily Report Card](#)"
- **May 14, 12 to 1 pm**, AHC 1 #110, "[Community Workshop: Creating a Daily Report Card](#)"
- **May 15, 7 to 8 pm**, Murray E. Nelson Government & Cultural Center, 102050 Overseas Highway Key Largo, FL, "[To Live and Work Beneath the Sea: Aquarius.](#)" presented by [Tom Potts](#)

June 2015

- **June 11, 12 to 1 pm**, AHC 1 #110, "[Community Workshop: Understanding Autism and How Early Intervention Can Help](#)"
- **June 11, 6 to 7 pm**, AHC 1 #110, "[Community Workshop: Understanding Autism and How Early Intervention Can Help](#)"
- **June 21 through June 23**, BBC, "[LAJSA XVII: International Research Conference of the Latin American Jewish Studies Association](#)"

Awards Received—March 2015

FIU researchers were awarded \$7,320,648 in March 2015. Below is a listing of awards received.

PI: Malek Adjouadi

Elec and Computer Eng

Award Action Type: Initial

Awarding Sponsor: University of Miami

Title: A Consortium to Study Novel Markers of Early Alzheimer's disease Award: \$ 40,498

PI: Kemal Akkaya

Elec and Computer Eng

Award Action Type: Initial

Awarding Sponsor: National Science Foundation

Title: REU Site: Security of Smart Things: From Small Devices to Large Infrastructures Award: \$ 55,682

PI: Kemal Akkaya

Elec and Computer Eng

Award Action Type: Initial

Awarding Sponsor: National Science Foundation

Title: REU Site: Security of Smart Things: Participant Support Award: \$ 300,240

PI: Frederick W Anderson

COM Humanities Hlth and Soc

Award Action Type: Initial

Awarding Sponsor: FIU Foundation

Title: Green Family Foundation NeighborhoodHELP; Mobile Health Center Award: \$ 158,040

PI: Frederick W Anderson

COM Humanities Hlth and Soc

Award Action Type: Increase

Awarding Sponsor: Health Foundation of South Florida

Title: Green Family Foundation (GFF) NeighborhoodHELP Mobile Health Center Award: \$ 24,542

PI: Shekhar Bhansali

Elec and Computer Eng

Award Action Type: Initial

Awarding Sponsor: PicoCal Inc

Title: Biosensors- Effect of design on efficacy of sensors Award: \$ 7,261

PI: Eric Bishop-Von Wettberg

Biology

Award Action Type: Increase

Awarding Sponsor: University of California Davis

Title: A reverse-introgression and community genomics strategy to enrich Award: \$ 113,691

PI: Eric Bishop-Von Wettberg

Int'l Ctr for Tropical Botany

Award Action Type: Initial

Awarding Sponsor: National Science Foundation

Title: DISSERTATION RESEARCH: Evolution and domestication genetics Award: \$ 18,850

PI: Werner Boeglin

Physics

Award Action Type: Initial

Awarding Sponsor: U.S. Department of Energy

Title: Hadronic Physics with Electromagnetic Probes Award: \$ 250,681

PI: Kevin Boswell

Biology

Award Action Type: Increase

Awarding Sponsor: Nova Southeastern University

Title: DEEPEND: Deep-Pelagic Nekton Dynamics of the Gulf of Mexico Award: \$ 12,600

PI: Kathryn Elizabeth Brogan

Dietetics and Nutrition

Award Action Type: Continuation

Awarding Sponsor: Henry Ford Health System

Title: Encouraging Young Adults to Make Effective Nutrition Choices: MENU Gen Y Award: \$ 7,650

PI: Deron Burkepile

Biology

Award Action Type: Initial

Awarding Sponsor: National Science Foundation

Title: CAREER: Fish-derived nutrients in a coral reef ecosystem - impacts on benthic Award: \$ 177,744

PI: Catherine Camille Coccia

Dietetics and Nutrition

Award Action Type: Initial

Awarding Sponsor: U.S. Department of Agriculture

Title: Preventing Overweight/Obesity in Elementary School Children: Award: \$ 150,000

PI: Stewart J D'Alessio

Criminal Justice

Award Action Type: Initial

Awarding Sponsor: Miami-Dade County

Title: Project PEACE: People Engaged and Advocating for Community Empowerment. Award: \$ 29,999

PI: Matthew DeGennaro

Biomolecular Science Institute

Award Action Type: Initial

Awarding Sponsor: National Institutes of Health

Title: Identifying Mosquito Receptors that Detect Human Odor Award: \$ 159,600

PI: Nazira El-hage

COM Immunology

Award Action Type: Increase

Awarding Sponsor: National Institutes of Health

Title: Role of Autophagy in Microglia-induced NeuroAIDS in Substance Abuse Award: \$ 357,062

PI: Sheldon D Fields

Nursing and Hlth Sci Deans Off

Award Action Type: Supplemental

Awarding Sponsor: FHI 360

Title: HIV Prevention Trials Network Leadership Award: \$ 12,623

PI: Zhaohui J Fu

Library Operations

Award Action Type: Initial

Awarding Sponsor: University of Florida

Title: Unearthing St Augustines Colonial Heritage Using Geo-spatially Enabled Award: \$ 57,500

PI: Arindam Gan Chowdhury

Civil and Environ Engineering

Award Action Type: Initial

Awarding Sponsor: National Science Foundation

Title: NSF I-Corps: "Innovative Hurricane Damage Mitigation Systems" Award: \$ 10,000

PI: Cheng-Tin Gan

Civil and Environ Engineering

Award Action Type: Initial

Awarding Sponsor: TransAction Associates Inc

Title: 2015 Data Update and Maintenance for Rural INTDAS System Award: \$ 18,141

PI: Raul Gonzalez Jr

Center for Children and Fam

Award Action Type: Continuation

Awarding Sponsor: National Institutes of Health

Title: The Impact of Cannabis Use on the Neurocognitive Functioning of Award: \$ 489,301

PI: Michelle Hospital

SISH

Award Action Type: Continuation

Awarding Sponsor: Pennsylvania State University

Title: A Longitudinal Study of Parent Communication with College Students Award: \$ 80,935

PI: Julio E Ibarra

CIARA

Award Action Type: Initial

Awarding Sponsor: National Science Foundation

Title: IRNC Backbone - AmLight Express and Protect (ExP)

Award: \$ 1,000,000

PI: Leonel E Lagos

ARC Applied Research Center

Award Action Type: Increase

Awarding Sponsor: Office of Environmental Management

Title: Florida International University's Research Support to the Department

Award: \$ 427,807

PI: Leonel E Lagos

ARC Applied Research Center

Award Action Type: Increase

Awarding Sponsor: Office of Environmental Management

Title: Florida International University's Research Support

Award: \$ 243,873

PI: Leonel E Lagos

ARC Applied Research Center

Award Action Type: Increase

Awarding Sponsor: Office of Environmental Management

Title: Florida International University's Research Support to the

Award: \$ 193,424

PI: Leonel E Lagos

ARC Applied Research Center

Award Action Type: Increase

Awarding Sponsor: Office of Environmental Management

Title: Florida International University's Research Support to the

Award: \$ 268,825

PI: Leonel E Lagos

ARC Applied Research Center

Award Action Type: Increase

Awarding Sponsor: Office of Environmental Management

Title: Florida International University's Research Support to the

Award: \$ 384,757

PI: Christian Larsen

The Wolfsonian

Award Action Type: Initial

Awarding Sponsor: Emily Hall Tremain Foundation

Title: Philodendron: From Pan-Latin Exotic to American Modern

Award: \$ 150,000

PI: Kingsley Lau

Civil and Environ Engineering

Award Action Type: Initial

Awarding Sponsor: Florida Department of Transportation

Title: Corrosion Evaluation of Novel Coatings for Steel Components of

Highway Bridges: Phase II

Award: \$ 98,587

PI: Chengxian Lin

Mechanical and Mat Engineering

Award Action Type: Initial

Awarding Sponsor: American Society of Heating Refrigerati

Title: Grant-in-Aid: Toward a fast modeling, real-time energy simulation,

Award: \$ 10,000

PI: Wei-Chiang Lin

Biomedical Engineering

Award Action Type: Continuation

Awarding Sponsor: Miami Children's Hospital

Title: Multimodal Neuromonitoring and Neuroprotection in Critically Ill Children Award: \$ 18,692

PI: Jason Xiaowen Liu

Computer Info Sciences

Award Action Type: Initial

Awarding Sponsor: Los Alamos National Laboratory

Title: Scalable Discrete Event Simulation for Performance Prediction Award: \$ 150,000

PI: Dwayne McDaniel

ARC Applied Research Center

Award Action Type: Increase

Awarding Sponsor: U.S. Department of Energy

Title: Development of Reduced Order Model for Reacting Gas-Solid Flow Award: \$ 18,248

PI: Norman D Munroe

OSAS Engineering and Computing

Award Action Type: Increase

Awarding Sponsor: National Action Council for Minorities

Title: NACME Initiative at Florida International University Award: \$ 41,000

PI: Edward P Murray

Metropolitan Center

Award Action Type: Initial

Awarding Sponsor: City of Hallandale

Title: February 2015 Hallandale Beach CRA Strategic Planning Retreat Award: \$ 7,950

PI: Nezh Pala

Elec and Computer Eng

Award Action Type: Increase

Awarding Sponsor: University of Utah

Title: 3D Simulation of THz Plasmonic Structures Award: \$ 40,420

PI: Carlos Manuel Parra

COB Dept of Marketing

Award Action Type: Initial

Awarding Sponsor: Inter-American Development Bank

Title: Impact of livelihood-linked microfinance products and enterprise Award: \$ 99,550

PI: Jeremy W Pettit

Center for Children and Fam

Award Action Type: Initial

Awarding Sponsor: National Institutes of Health

Title: Neural correlates of attention training in children with anxiety disorders Award: \$ 33,836

PI: Shaolei Ren

Computer Info Sciences

Award Action Type: Initial

Awarding Sponsor: National Science Foundation

Title: CAREER: Coordinating Tenants in Colocation Data Centers via Market Approach Award: \$ 130,344

PI: Margaret Sibley

Center for Children and Fam

Award Action Type: Initial

Awarding Sponsor: National Institute of Mental Health

Title: Effectiveness of MI Enhanced Behavior Therapy for Adolescents with ADHD Award: \$ 465,983

PI: Berrin Tansel

Civil and Environ Engineering

Award Action Type: Initial

Awarding Sponsor: Miami-Dade County Water and Sewer

Title: 2015/2016 Water-Use Consumption Data Gathering Award: \$ 77,343

PI: Tiffany Troxler

Southeast Env Research Ctr

Award Action Type: Continuation

Awarding Sponsor: University of Florida

Title: Effects of saltwater intrusion on Everglades peat soil Award: \$ 31,110

PI: Yukching Tse Dinh

Chemistry

Award Action Type: Increase

Awarding Sponsor: National Institutes of Health

Title: Control of DNA Topology Award: \$ 22,352

PI: Maria Elena Villar

Advertising and Public Rel

Award Action Type: Initial

Awarding Sponsor: Hampton University

Title: Hampton University Ministers' Conference Multimedia Men's Health Project Award: \$ 18,996

PI: Eric Wagner

School of Social Work

Award Action Type: Continuation

Awarding Sponsor: National Institute on Drug Abuse

Title: Brief Intervention for Substance Using Native Youth Award: \$ 575,598

PI: Eric Wagner

School of Social Work

Award Action Type: Initial

Awarding Sponsor: Ware Foundation

Title: Yoga as a Complement to Standard Care for Adolescents with Award: \$ 24,734

PI: Yuying Zhang

Biology

Award Action Type: Increase

Awarding Sponsor: University of Florida

Title: Developing a size-structured stock assessment model for the spiny lobster Award: \$ 51,581

PI: Yuying Zhang

Biology

Award Action Type: Increase

Awarding Sponsor: University of Florida

Title: Developing a size-structured stock assessment model for the spiny lobster Award: \$ 3,000

Limited Submission Funding Opportunities

Below are limited submission opportunities with upcoming internal deadlines:

Agency	Program	Institutional Submission Limits	Internal Deadline	Agency Deadline
NSF	<u>Collections in Support of Biological Research (CSBR)</u> (NSF 14-564)	Three per organization. In a single round of the CSBR competition, only one proposal may be submitted from any individual collection within an organization. One organization may not submit more than three proposals to any one CSBR competition.	5/13/2015	7/13/2015
NIH	<u>Developing and Improving Institutional Animal Resources (G20)</u> (PAR-13-219)	One per institution	6/3/2015	8/3/2015
NSF	<u>Improving Undergraduate STEM Education: Pathways into Geoscience</u> (NSF 15-526)	One per institution	6/14/2015	Prelim Proposal Deadline: 8/14/2015 Agency Deadline: 10/05/2015
NIH	<u>Institutional Research and Academic Career Development Awards (IRACDA) (K12)</u> (PAR-13-290)	One per institution	7/24/2015	9/24/2015
FL Dept Health	<u>Ed and Ethel Moore Alzheimer's Disease Research Program: Consortium Grant</u> *	Institution may be lead on only one consortium grant application.	06/19/2015	Agency LOI/Prelim Deadline: On or around 7/10/2015 Agency Proposal Deadline: On or around 8/07/2015
FL Dept Health	<u>Ed and Ethel Moore Alzheimer's Disease Research Program: Standard Grant</u> *	Only four standard grant applications per institution. Additional limitation is that only two applications may be submitted within the same research priority	06/19/2015	Agency LOI/Prelim Deadline: On or around 7/10/2015 Agency Proposal Deadline: On or around 8/07/2015
FL Dept Health	<u>Ed and Ethel Moore Alzheimer's Disease Research Program: Pilot Grant</u> *	Only two pilot grant applications per institution. Additional limitation is that the two applications must not be within the same research priority	06/19/2015	Agency LOI/Prelim Deadline: On or around 7/10/2015 Agency Proposal Deadline: On or around 8/07/2015
FL Dept Health	<u>Ed and Ethel Moore Alzheimer's Disease Research Program: Postdoctoral Research Fellowship Grant</u> *	Only one patient-oriented fellowship application per institution.	06/19/2015	Agency LOI/Prelim Deadline: On or around 7/10/2015 Agency Proposal Deadline: On or around 8/07/2015

***This is an Advance Notice of Funding Opportunity and all dates are subject to change upon final release of opportunity by the Sponsor**

Please visit our website at: <http://research.fiu.edu/funding/pages/limited-submissions.html> to review our monthly limited submissions or for further instructions on how to prepare and/or submit your limited submission application.

Funding Opportunities

The funding opportunities are in a separate excel file, which includes a filter for agency, date and opportunity number.

Contact ORED Senior Leadership

Name	Title	Email Address
Andrés G. Gil	Vice President for Research	Andres.gil@fiu.edu
Tonja Moore	Associate Vice President for Research Strategic Planning & Operations	Tonja.moore@fiu.edu
Luis P. Salas	Associate Vice President for Research	Luis.salas@fiu.edu
Mirtha Alberto	Director, Budget & Cost Analysis	Mirtha.alberto@fiu.edu
Henry Artigues	Director, Research Operations & External Partnerships	Henry.artigues@fiu.edu
David Driesbach	Assistant Vice President, Research Information Systems	David.driesbach1@fiu.edu
Christopher Grayson	Director, Research Integrity	Christopher.grayson@fiu.edu
C. Emily Gresham	Assistant Vice President, Innovation & Economic Development	Emily.gresham@fiu.edu
Robert Gutierrez	Assistant Vice President and Director, Pre-Award	Robert.gutierrez@fiu.edu
Pedro Hernández	Director, Technology Management & Commercialization	Pedro.hernandez7@fiu.edu
Maureen Pelham	Director, Research Development	Maure.pelham@fiu.edu
Aida Reus	Director, Post-Award	Aida.reus@fiu.edu
Horatiu Vinerean	Director, Laboratory Animal Research ; Attending Veterinarian	Horatiu.vinerean@fiu.edu
Susan Webster	Director, Training & International Research Initiatives	Susan.webster@fiu.edu



Think differently,

go beyond the **world** you know.

Do something great

with the opportunity you are given.

**Be Worlds
Ahead**

FLORIDA INTERNATIONAL UNIVERSITY
OFFICE OF RESEARCH AND ECONOMIC DEVELOPMENT
11200 SW 8th Street
MARC 430
Miami, FL 33199
<http://research.fiu.edu>