

## Accessing Topaz for MAC users with Silverlight Compatibility Issues

The following instructions are for MAC users unable to access the Topaz application due to incompatibility issues with Silverlight.

1. Log into the FIU VPN if you are off campus.

See [more information](#) about getting started with FIU's Virtual Private Network(VPN) and the required [two-factor authentication](#).

2. Open a browser and go to <https://vcl.fiu.edu>

If you get a message about the connection not being private, click on **Advanced**, then click the option to proceed with vcl.fiu.edu.



### Your connection is not private

Attackers might be trying to steal your information from **vcl.fiu.edu** (for example, passwords, messages, or credit cards). [Learn more](#)

NET::ERR\_CERT\_COMMON\_NAME\_INVALID

Help improve Chrome security by sending [URLs of some pages you visit, limited system information, and some page content](#) to Google. [Privacy policy](#)

Hide advanced

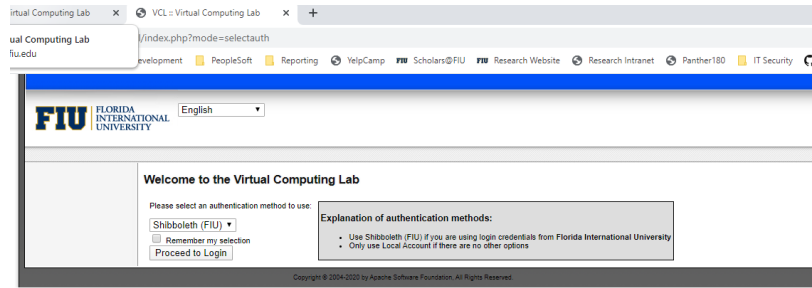
Back to safety

This server could not prove that it is **vcl.fiu.edu**; its security certificate is from **webvcl01.fiu.edu**. This may be caused by a misconfiguration or an attacker intercepting your connection.

[Proceed to vcl.fiu.edu \(unsafe\)](#)



3. Click 'Proceed to Login'

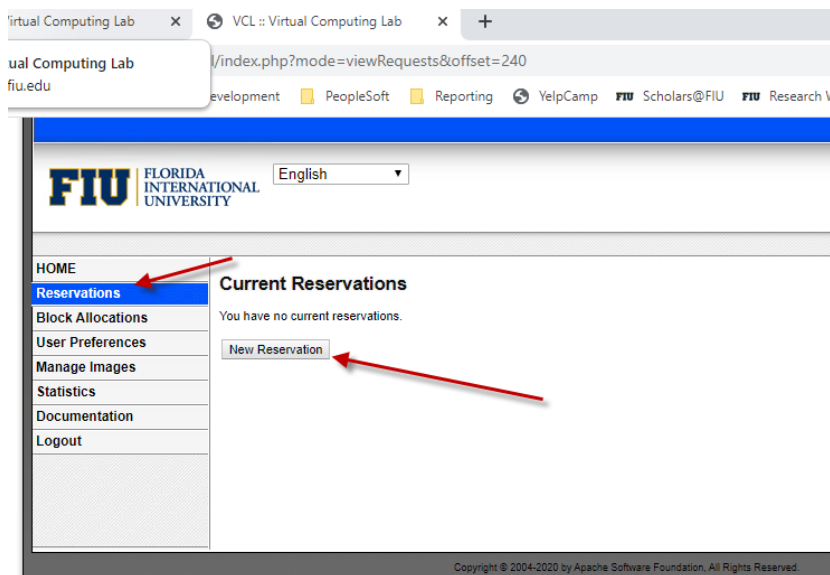


4. Enter your FIU credentials and click Login.

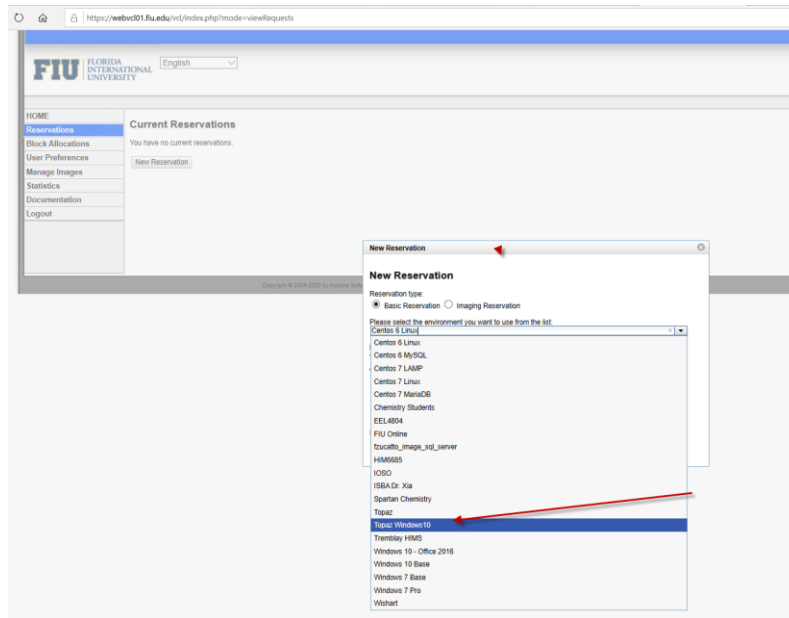


The use of Florida International University's information technology resources is contingent upon proper authorization. By logging in to this system, you agree to abide by all applicable federal, state and local laws, State of Florida Board of Governors rules, and University rules, regulations and policies. You also understand that the misuse or misappropriation of the University's information technology resources or violation of any applicable law, rule, regulation or University policy, may result in the revocation of your access privileges.

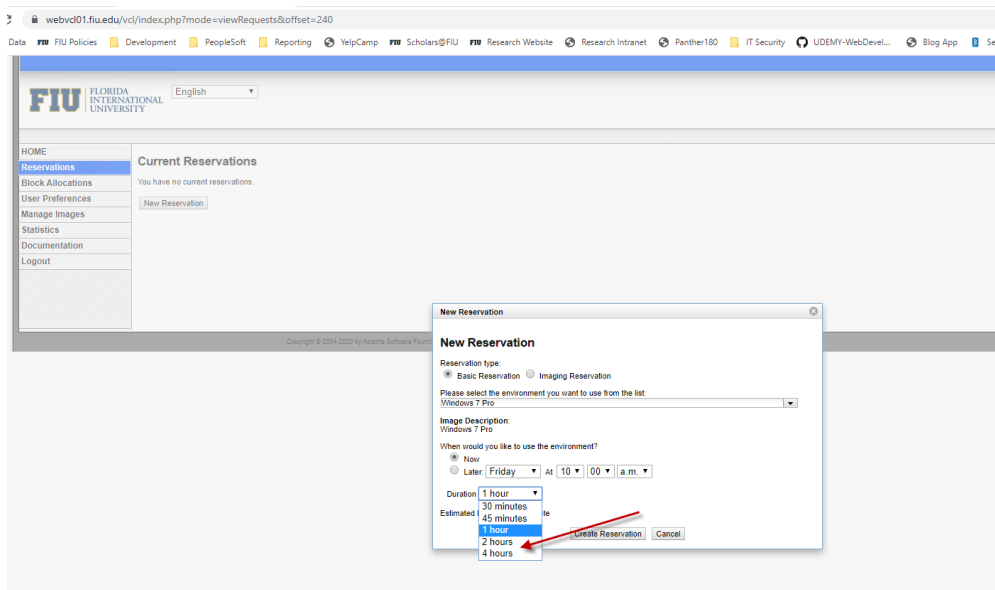
5. Click 'Reservations' and then click 'New Reservation'.



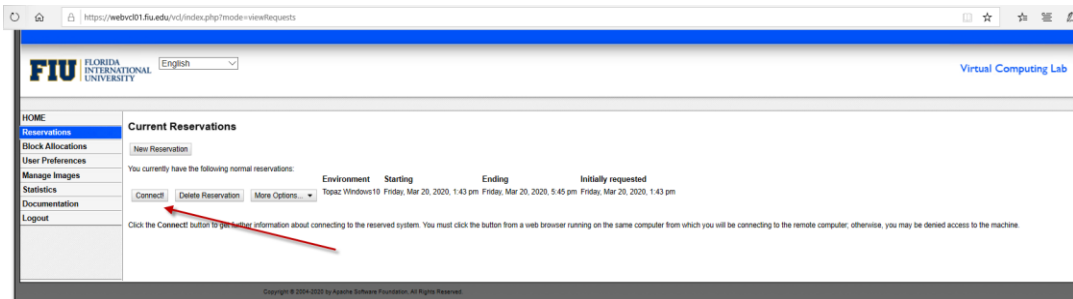
6. Select 'Topaz Windows 10' from the drop-down box.



7. Select the requested Duration in the drop-down box and then click 'Create Reservation'.



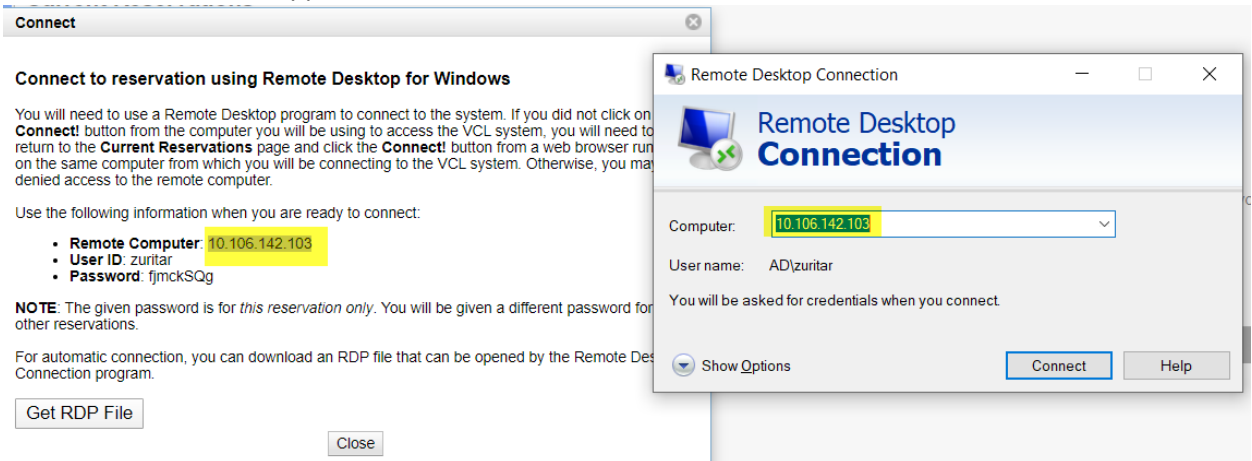
8. Once the Reservation is ready, click the Connect button.

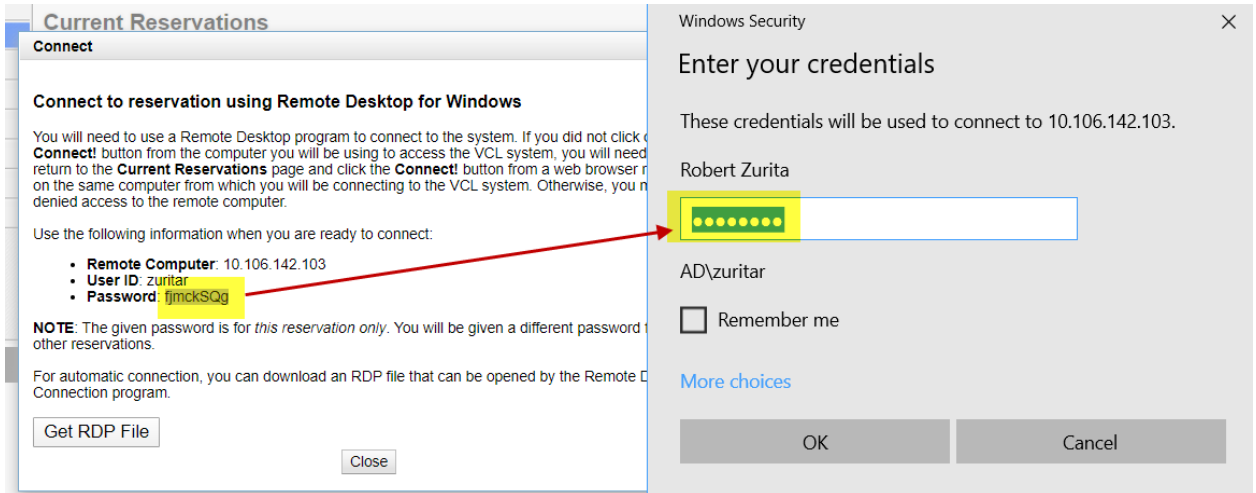


9. Write down the following information that is generated within the pop-up screen since you will need to enter them in the next step.

- Remote Computer Name
- User ID
- Password

10. Log into the environment using the Microsoft Remote Desktop Capabilities on your computing device and using the information from the previous step. MAC users may need to download the software from the Apple Store.





11. Once the remote desktop Windows environment is loaded, double-click the Internet Explorer icon on the desktop and navigate to <https://topaz.fiu.edu>

