

January 2020 Edition

The cover features a cityscape at sunset with the FIU logo and the text 'Research & Economic Development COMMUNICATOR'.

**FIU** | Research &  
Economic Development  
**COMMUNICATOR**

ORED Communicator - January 2020

## Transfer and Collection of Biospecimens

FIU and Baptist Health have executed a Material Transfer Agreement that governs the transfer of biospecimens to FIU researchers in compliance with applicable ethical and legal requirements. The agreement also covers the prospective collection of biospecimens tailored to the researcher's specific needs... [more](#)

---

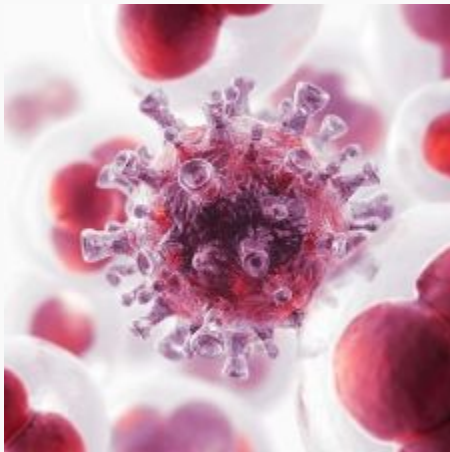
**FIU researchers received over  
\$12.2M in awards during  
November 2019**

[Visit our website for more details](#)

## Postdoctoral Achievements: January 2020

- Woubet G. Alemu, Ph.D.

[Click for full details](#)



FIU's [Biomolecular Sciences](#) Institute received a \$1.6M grant from the National Institute of General Medical Sciences to develop rapid diagnosis and improved treatment of cancer and neurodegenerative diseases such as Alzheimer's and Parkinson's.

[Read the full article](#)

---



## Looking for external funding opportunities?

- [Current Funding Opportunities](#)
- [Limited Submissions](#)
- [Arts, Humanities and Social Sciences](#)

[Find Funding Opportunities](#)

---

## Upcoming Events



[Emotion Dysregulation: What do we need to know to treat the sickest kids?](#)

January 24, 2020 from 12 to 1 pm

AHC 1 #110

---



[Prenatal Cocaine Exposure: Developmental processes from birth to adolescence](#)

January 31, 2020 from 12 to 1 pm

AHC 1 #110



[2020 Miami International Child & Adolescent Mental Health Conference](#)

February 5 through 7, 2020

FIU Kovens Conference Center

[More Events](#)

## Connect With Us

[Follow us](#) on twitter for the latest FIU Research News and Updates!

#FIUResearch



Copyright © Florida International University 2019, All rights reserved.

**Our mailing address is:**

11200 SW 8th Street—MARC #430 | Miami, FL 33199 | 305-348-2494  
[research@fiu.edu](mailto:research@fiu.edu) [research.fiu.edu](http://research.fiu.edu) [research.fiu.edu/publications](http://research.fiu.edu/publications)